



# **Clearline**

## **Enamelled Flue Pipe**



**Clearline Enamelled Flue Pipe is a high quality single skin flue pipe that is made of 1.2mm zero carbon steel with two thick coats of enamel both inside and out. It has an anthracite finish that blends well with most modern stoves. A particular attraction is the clean line that this flue offers, the male end being slightly smaller so any joins are unobtrusive. The access doors are flush-fit and enamelled to match, held in place by a simple bar. All seams are evenly welded. There is a wide choice of components including adaptors, bends, tees and pipes.**

**Please read all instructions before beginning your installation. Failure to install in accordance with these instructions will invalidate the conditions of certification and the manufacturer warranty.**

## INDEX

PRODUCT IDENTIFICATION.....	Page 2
FUELS AND APPLIANCES .....	Page 3
GENERAL INSTALLATION REGULATIONS ....	Pages 3-4
CLEARLINE ENAMELLED FLUE COMPONENTS ....	Pages 5-9
MAINTENANCE AND CHIMNEY CLEANING....	Page 10
WARRANTY.....	Page 11

A COMMON CAUSE OF CHIMNEY RELATED FIRES IS THE FAILURE TO MAINTAIN THE REQUIRED AIR GAP BETWEEN THE OUTER SURFACE OF THE FLUE AND COMBUSTIBLE MATERIALS.

IT IS VITAL THAT THIS FLUE PIPE SHOULD BE INSTALLED WITH THE CORRECT MINIMUM CLEARANCES AS SPECIFIED IN THESE INSTRUCTIONS.

## PRODUCT IDENTIFICATION

Clearline Enamel Flue

Sizes:125mm, 150mm,180mm and 200mm

Tested for compliance with BS EN1856-2

Product Designation: EN1856-2 T600-N1-Vm-V2-L80100 G(800)

HETAS listed for use on solid fuel applications

Total thickness of steel 1.2mm. All seams fully welded.

**Distance to combustibles MUST be at least three times the diameter of the pipe.**

Available in black enamel only.

## FUELS AND APPLIANCES

CLEARLINE ENAMELLED FLUE PIPE conforms to BS EN1856-2. It is a single skin flue pipe designed to be used with solid fuel, biomass, oil or gas stoves and boilers. Clearline Enamelled Flue Pipe is made of laser welded steel and is enamelled with two coats on both the inside and outside, guaranteeing resistance and stability even at higher temperatures. It has been tested to have a working temperature of 600°C. Thickness of the steel is 1.2mm. Clearline Enamelled Flue Pipe complies with British and European Standards.



## GENERAL INSTALLATION REGULATIONS

Chimney installation should be carried out by a competent person. We recommend installation by approved installers registered under a Competent Person Scheme for solid fuel applications, such as Hetas. If installation is carried out by a non HETAS registered installer, the installation must be certified by a local Building Control inspector. Planning permission may be required, and reference should be made to the local Building Control Department.

### VENTILATION

It is very important that sufficient air for combustion and ventilation is provided to the room containing the appliance to enable correct and efficient working of the appliance and chimney system.

### CARBON MONOXIDE ALARMS

A carbon monoxide alarm must be provided in the room where the solid fuel or gas appliance is located.

### NOTICE PLATE

The Notice plate for Clearline flue systems should be marked up in indelible ink and securely fixed in an unobtrusive but obvious position within the building such as:

- Next to the electricity meter
- Next to the chimney installation
- Next to the water supply stop-cock

For further information refer to building regs:

[https://www.gov.uk/government/uploads/system/uploads/attachment\\_data/file/468872/ADJ\\_LOCKED.pdf](https://www.gov.uk/government/uploads/system/uploads/attachment_data/file/468872/ADJ_LOCKED.pdf)

## GENERAL INSTALLATION REGULATIONS

- All chimney installations should comply with Document J of Building Regulations.  
[https://www.gov.uk/government/uploads/system/uploads/attachment\\_data/file/468872/ADJ\\_LOCKED.pdf](https://www.gov.uk/government/uploads/system/uploads/attachment_data/file/468872/ADJ_LOCKED.pdf)
- Clearline Enamelled Flue Pipe has been designed for use on all types of stove, cooker and boiler, for internal use only.
- There should be no more than 4 bends in a system. (A 90° Tee on the back of the stove counts as 2 bends.
- The minimum flue size for non-DEFRA approved stoves is 150mm.
- The flue size must NEVER be smaller than the appliance outlet, unless approved by stove manufacturer.
- Flue needs to switch from single skin to a twin wall insulated flue at 425mm below a ceiling.
- Minimum distances to combustible material MUST always be observed.
- Clearline Enamelled Flue Pipe should be 3 times its diameter from combustible material (including timber joists, dry wall, plaster and plywood), if not heat shielded. (i.e. 150mm pipe should be 450mm away from combustible materials).
- It is recommended that a vertical run of at least 600mm should be allowed immediately above the appliance prior to any change of direction.
- To allow for expansion as the stove heats up, it is important that the weight of the flue system is not carried by the appliance. If the chimney is built from the stove upwards then the flue lengths must be raised by 3-5mm before the supports are fixed. A common practice would be to use small combustible packers (eg. folded cardboard) placed in the flue spigot to sit the first length or adaptor on. When the stove is lit these will burn away while the fire-cement sets.
- Clearline Enamelled Flue Pipe should NOT be used to pass through ceilings or walls.
- Provision should be made for cleaning the appliance, this can be achieved by fitting a flue pipe with an access door.
- It is recommended that all solid fuel appliances and associated flue system are swept as frequently as necessary, at least once a year.



**Failure to follow the installation instructions could cause  
FIRE, CARBON MONOXIDE POISONING, OR DEATH.**

## CLEARLINE ENAMELLED FLUE COMPONENTS

Clearline Enamelled Flue Pipe should be fitted with the smaller diameter end always directed **downwards** towards the appliance. This means all condensates will stay within the flue system and not leak to the outside of the pipe onto the appliance.

Each joint should be fixed with fire cement or a high temperature silicone sealant. \*\*\* Denotes flue diameter ie: 150mm = 67-150-001

### STARTING COMPONENTS

#### INCREASING ADAPTOR

Code:67\*\*\*002

An increasing adaptor for connecting the stove with a smaller flue collar to a larger size of flue pipe Eg. 100mm flue outlet on stove to 125mm Clearline Enamelled Flue Pipe or 125-150mm.



#### FLUE LENGTHS

1000MM LENGTH

Code:67-\*\*\*-010

500MM LENGTH

Code:67-\*\*\*-011

250MM LENGTH

Code:67-\*\*\*-012



## FLUE LENGTHS WITH DOOR

1000MM LENGTH WITH DOOR

Code:67-\*\*\*-015

500MM LENGTH WITH DOOR

Code:67-\*\*\*-016

250MM LENGTH WITH DOOR

Code:67-\*\*\*-017

Clearline Enamelled Flue Lengths with Door have the sweeping access door flush in line with the body of the flue giving a very neat appearance. The door is also enamelled unlike some other makes of flue pipe. The door is held in place with one screw, allen key required. All Clearline Enamelled Flue lengths with door come with a ceramic high temperature gasket already fitted.



320-420 ADJUSTABLE FLUE LENGTH

Code:67-\*\*\*-022

The Clearline Two-Part Adjustable Flue can adjust between 320mm and 420mm allowing for easy fitting. The length has two rope gaskets which gives extra stability whilst also protecting the flue from getting scratched during installation.



## 250MM DAMPER UNIT

Code:67-\*\*\*-003

The Clearline Damper Unit comes complete with damper. This unit is often used with Workshop stoves, such as the Oakfire and Greenheart where sawdust and shavings are being used.



## BENDS AND TEES

Clearline Black Enamel Bends and Tees allow for offsets in the flue.

### 90 DEGREE TEE

Code:67-\*\*\*-035

Some stove installations require a rear flue outlet, the Clearline Enamelled Flue 90 Degree Tee allows for this. A Tee Cap is included with this part.



### 45 DEGREE BEND

Code:67-\*\*\*-031



### 45 DEGREE BEND WITH DOOR

Code:67-\*\*\*-041

All Clearline Enamelled Flue lengths with door come with a ceramic high temperature gasket already fitted.



### SUPPORTING COMPONENTS

Clearline Enamelled Wall Bracket

Code:67-\*\*\*-051

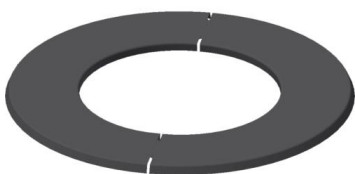


### TRIM RINGS

90 DEGREE SPLIT RING

Code:67-\*\*\*-091

150mm wide. Covers any gap to non-combustibles, or making good around flue as it passes through solid masonry.

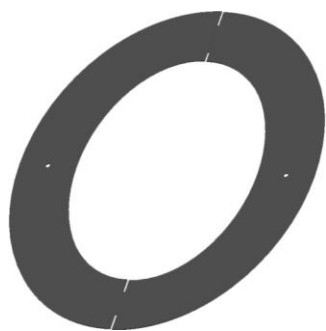




## 45 DEGREE SPLIT RING

Code:67-\*\*\*-092

150mm wide. Covers any gap to non-combustibles, or making good around angled flue as it passes through solid masonry.



A COMMON CAUSE OF CHIMNEY RELATED FIRES IS THE FAILURE TO MAINTAIN THE REQUIRED AIR GAP BETWEEN THE OUTER SURFACE OF THE FLUE AND COMBUSTIBLE MATERIALS.

IT IS VITAL THAT THIS FLUE PIPE SHOULD BE INSTALLED WITH THE CORRECT MINIMUM CLEARANCES AS SPECIFIED IN THESE INSTRUCTIONS.

# MAINTENANCE AND CHIMNEY CLEANING

## INSPECTION

- Chimney sweeping should be carried out by competent persons. The chimney should be designed to allow for easy inspection and and cleaning.
- A flue length with door, an inspection elbow or a 90° or 135° Tee with tee cap can form a suitable inspection point (unless cleaning/inspection can be done through the appliance).
- To aid cleaning, sufficient distance should be left between changes of direction to permit the safe passage of cleaning brushes within the system.
- It is recommended that chimneys serving solid fuel appliances be swept as frequently as necessary, but at least once a year.
- Chimney flue cleaning and inspection require the use of appropriate equipment – under no circumstances should chemical cleaners or mild steel tools be used to sweep stainless steel chimneys.
- We would advise that monthly checks are carried out to ensure that there is no build up of any deposits in the flue way of the connecting flue pipe or system chimney.

## **WARRANTY**

**This product is guaranteed for 12 years from date of purchase. For the warranty to be valid the following conditions must be observed:**

- The chimney must be correctly sized and installed according to these instructions, current Building Regulations and relevant British and European standards.
- Maintained and swept annually by a qualified and competent person and maintenance records kept updated for both appliance and system chimney.
- Used in combination with an appliance burning only Hetas or SFA approved fuels, in accordance with the appliance manufacturer's instructions.

**Please Keep These Instructions In A Safe Place For Future Reference.**



# **Clearline**

## **Enamelled Flue Pipe**

Flightway  
Dunkeswell Business Park  
Dunkeswell  
Honiton  
Devon  
EX14 4RD

[info@firepower.co.uk](mailto:info@firepower.co.uk)

VAT No.801261871  
Registered in the UK & Wales  
Company no. 04636920